



Powerdyne Forced Air Cooler

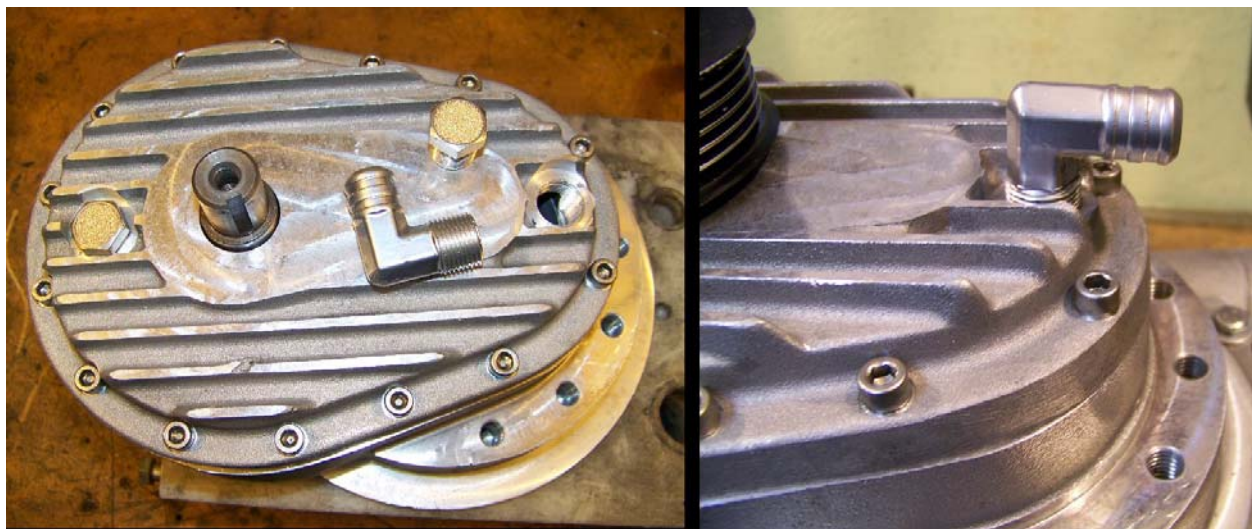
Find a location to mount your fan where it can get cool air—not in the engine compartment. Good places include behind the headlights, or in front of the radiator. It should be close enough to your Powerdyne so that the hose reaches. You can mount the electric fan with bolts through any of the 4 mounting holes, or just tie it in place with cable ties.

Route the hose from the fan to the Powerdyne in such a way that the hose does not get kinked. Any kink will decrease the amount of cool air that comes out.

If your Powerdyne has already been vented by us, simply remove one of the two vents we put in and install the elbow we have provided in its place. If your Powerdyne has not previously been vented, drill and tap a 3/8" NPT hole in your Powerdyne, and install the elbow supplied with your kit. You will also need to put another hole elsewhere in your case so the hot air can exit.

In the pics below the vents are in the face of the supercharger, which is ideal. However, the vents can go into the side of the supercharger case if needed.

Now just hook 12v power to the red wire from the fan, ground the black wire—and you are done! Test it by turning on the power and holding your hand over the exit vent on your Powerdyne—you should feel a nice breeze coming out.



928 MOTORSPORTS, LLC

Phone (920) 485-0928 Email: info@928motorsports.com Website: www.928motorsports.com