



The following photos and instructions are for the 928 Motorsports, LLC  
**Rear Sway Bar Mounts and Tie Down Hooks**





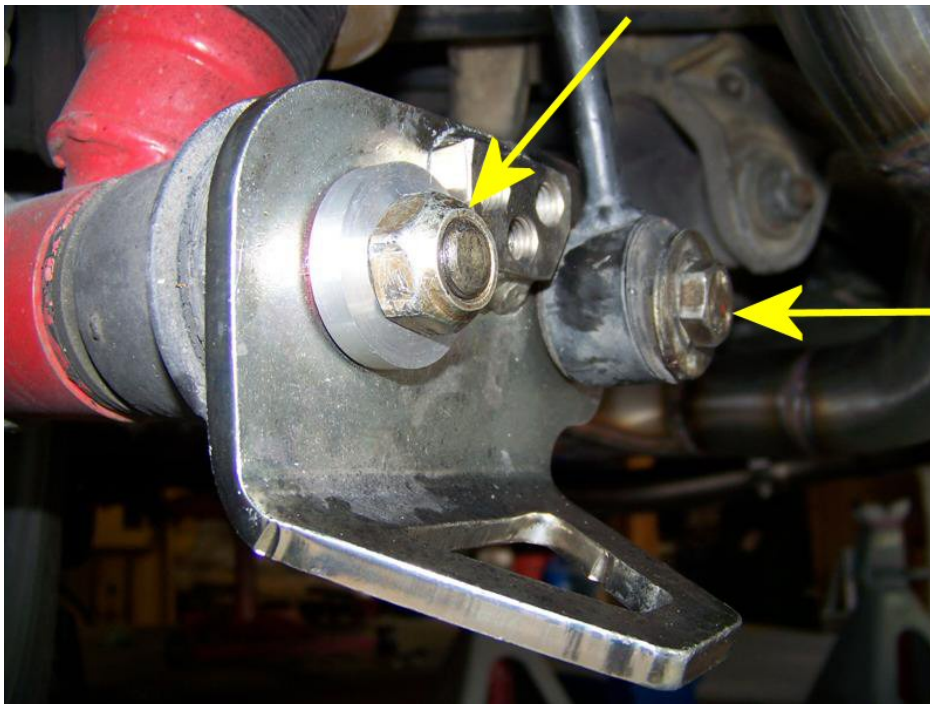
## Rear Sway Bar Mounts and Tie Down Hooks



Install the new drop-link mount as shown below.

### **Torque Specs:**

Tighten the 22mm nut to 103 ft lbs. You will need to hold the other end of the pin to keep it from turning as you tighten.



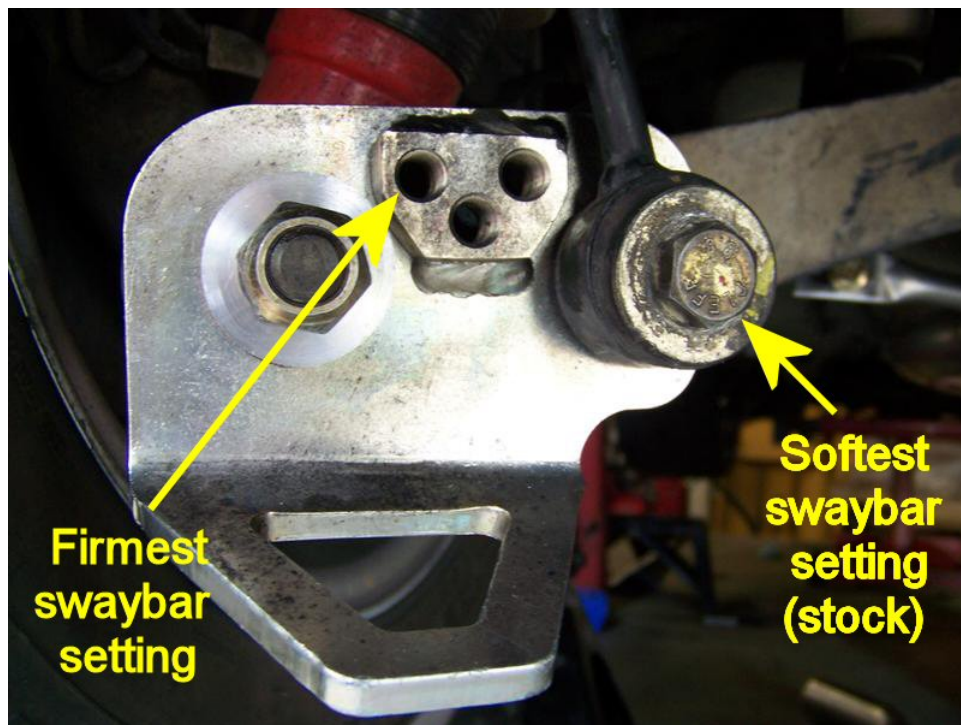
Tighten the lower drop-link bolt to 33 lb ft.



The following photos and instructions are for the 928 Motorsports, LLC  
**Rear Sway Bar Mounts and Tie Down Hooks**

### **Adjusting the Rear Sway Bar**

Moving the lower mount to the **outside** (closer to the tire) will make the sway bar “stiffer”.





The following photos and instructions are for the 928 Motorsports, LLC  
**Rear Sway Bar Mounts and Tie Down Hooks**

### Using the Tie-Down Hooks

Just latch on to them to tie your 928 down to your trailer. It is always recommended that the tie downs cross in the back, as shown.

